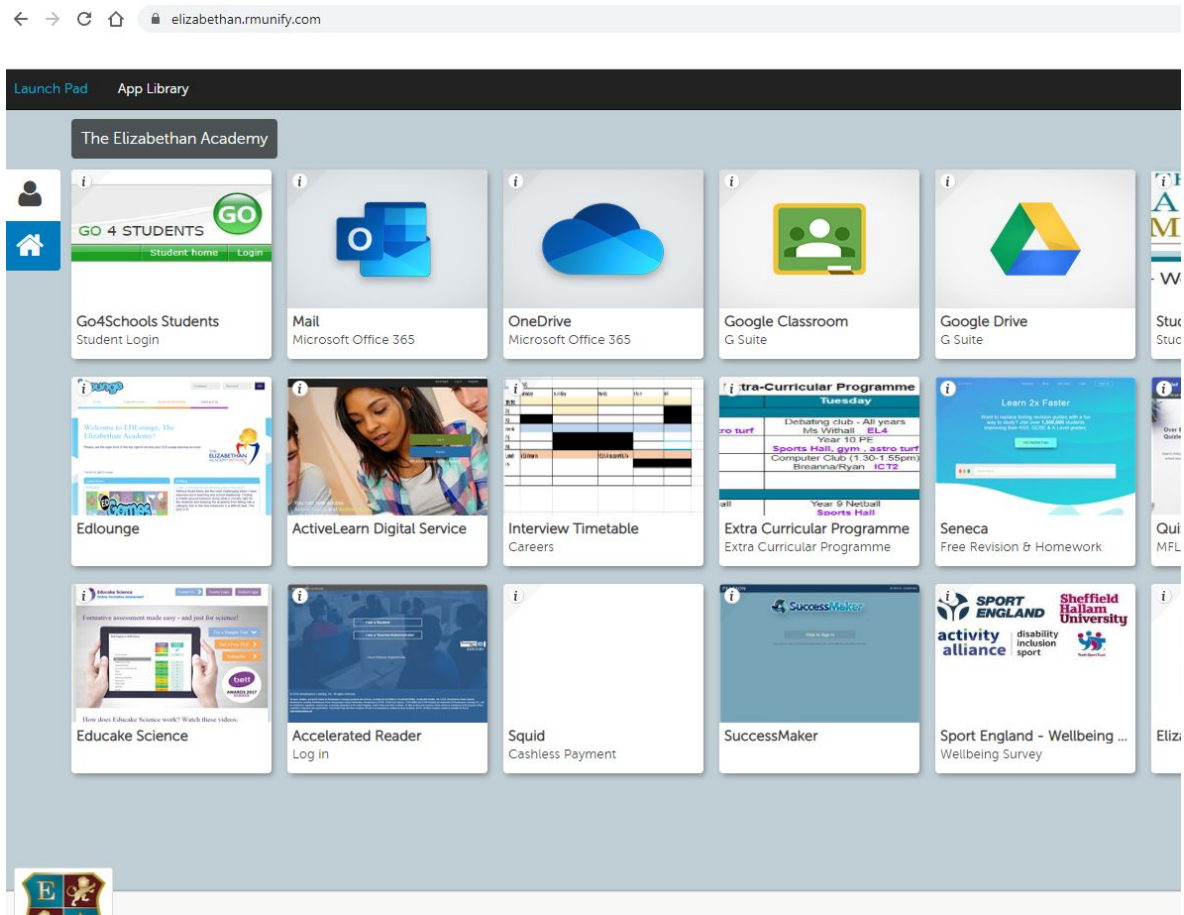


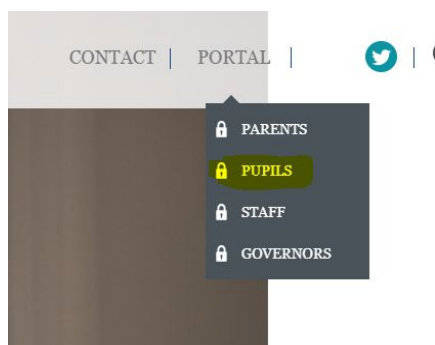
Introduction

The Elizabethan Academy uses a web-based launch pad for easy access to school resources which can be accessed from a computer that is connected to the internet. Once you have logged into the launch pad, you will see 'tiles' that are quick links that lead you to the key tools for working from home. Such as email, Google Drive, OneDrive, Google Classroom and the Go4schools homework portal. Here's what it looks like when you login:



How to log into the Elizabethan Launch Pad - RM Unify:

- 1) Goto the schools website (www.elizabethan.notts.sch.uk)
- 2) Click on Portal (top left)
- 3) Click on Pupils:

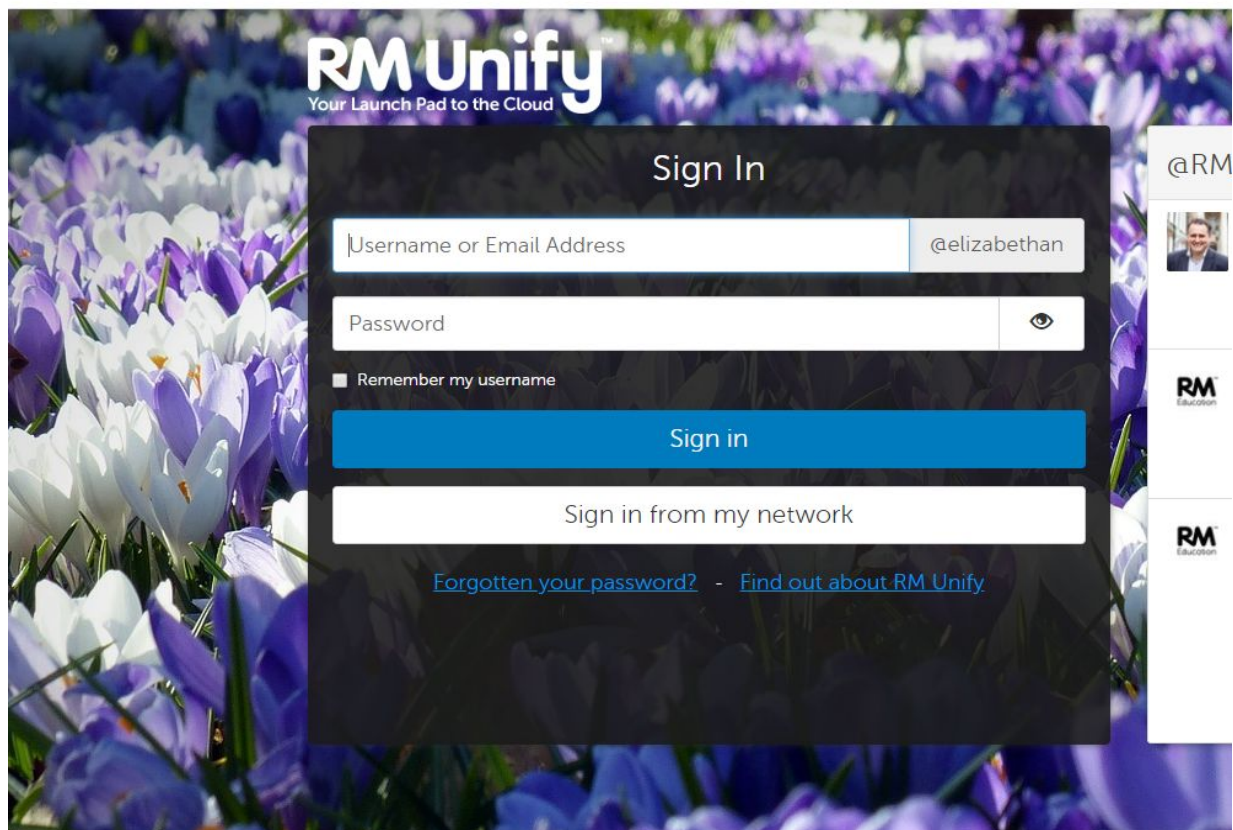


4) Click on the 'Elizabethan Portal' link:

Useful Links > Pupil Links

5) This will take you to <https://elizabethan.rmunify.com/> where you can put in your username and password (the one that you use for the school network when you login to a school pc in the classroom) - e.g. 16bloggsj@elizabethan.notts.sch.uk:

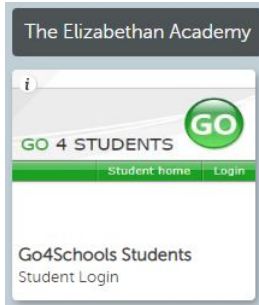
sts.platform.rmunify.com/Account/SignIn/elizabethan



6) Once you are logged in - bookmark this page for quicker access next time - that way you can go straight this login page

How students log into Go4schools:

- 1) Click on the Go4Schools Tile from the launch pad:



- 2) Enter your email address and password into the login boxes:



Welcome!

This is the GO 4 Schools login page for Students

In order to login, you will need to use the email address that your school holds for you.

If you don't have a password yet, or have forgotten your password, you can request a password reset email using the [First-time User?](#) and [Forgotten your Password?](#) links.

If you are having problems logging on, please contact your school.

Email address:	<input type="text" value="13test@elizabethan.notts.sch.uk"/>
Password:	<input type="password" value="*****"/>
<input type="checkbox"/> Remember my email address	
<p>GO 4 Students places a small number of cookies on your computer. We use cookies in order to make the website work and to provide information to help us make improvements.</p> <p>To find out more about the cookies, see our privacy policy.</p> <p>By logging in to GO 4 Students you are accepting cookies from this site.</p>	
<input type="button" value="Sign in"/>	

[First-time User?](#)

[Forgotten your Password?](#)

- 3) To access homework click on 'My Inbox' which is on the top right of the screen

Common Problems:

- If you are having trouble accessing GoogleDrive or OneDrive then check that you are not already logged into the browser using your personal (home) email address (you can view

the account details by hovering your mouse over the circle with the initial in on the right). If it says your personal account then sign out so that you can use the school one.

- Remember that your username for Unify launch pad is your network username and this starts with a number (the year of entry in year 7) followed by surname & first initial - for example, a year 7 pupil would be 19bloggsj and the password is the one you use on the network.
- If you are struggling to login to the launch pad - RMuNify - please check that the grey box says "@elizabethan" like it does in the image below:

RM Unify
Your Launch Pad to the Cloud

Sign In

Username or Email Address  @elizabethan

Password 

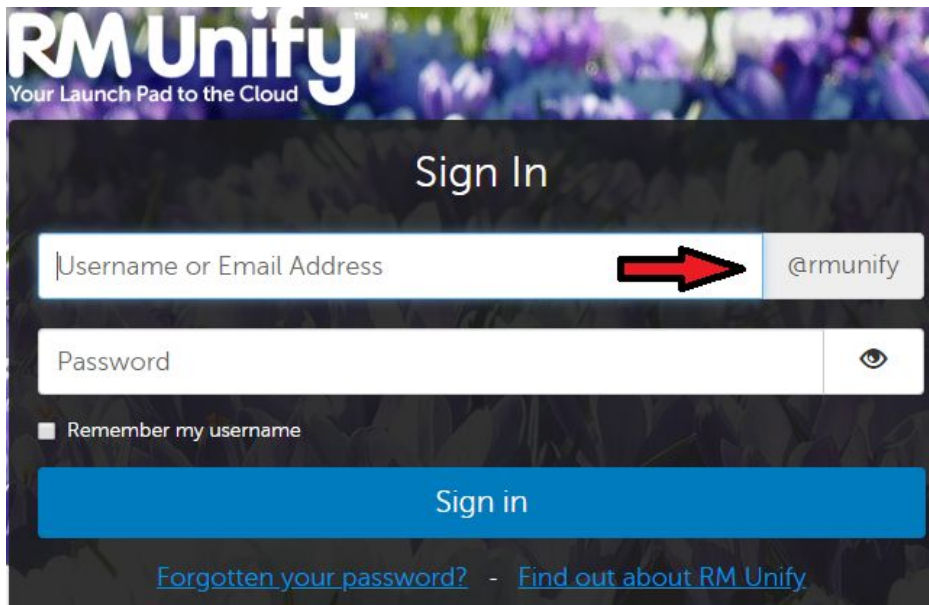
Remember my username

Sign in

Sign in from my network

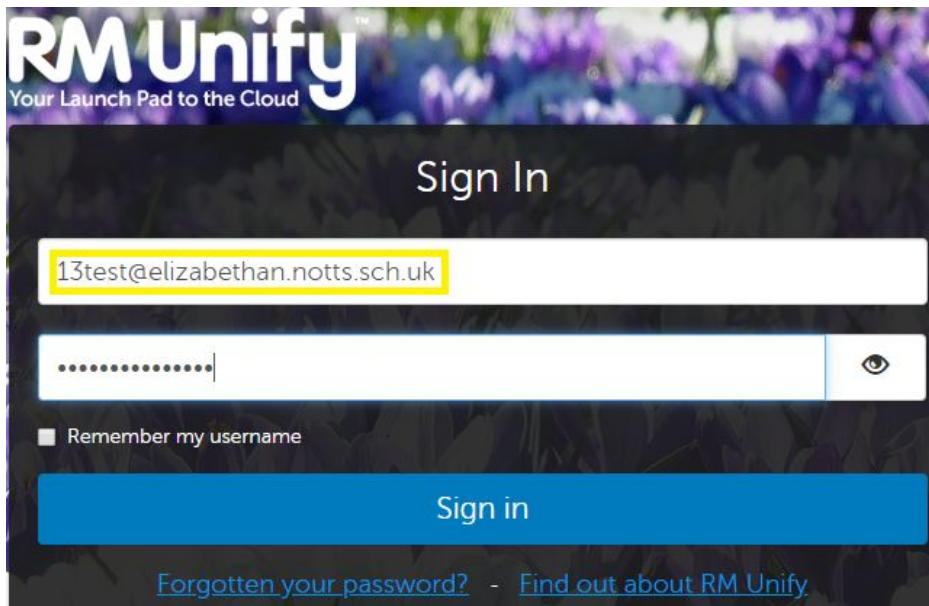
[Forgotten your password?](#) - [Find out about RMuNify](#)

If it does not, and it say “@munify” like this:



The screenshot shows the RM Unify sign-in page. At the top, the logo reads "RM Unify Your Launch Pad to the Cloud". Below the logo is the heading "Sign In". There are two input fields: "Username or Email Address" and "Password". The "Username or Email Address" field contains the text "@munify", and a red arrow points to this text. Below the username field is a checkbox labeled "Remember my username". At the bottom of the form is a blue "Sign in" button. Below the button are two links: "Forgotten your password?" and "Find out about RM Unify".

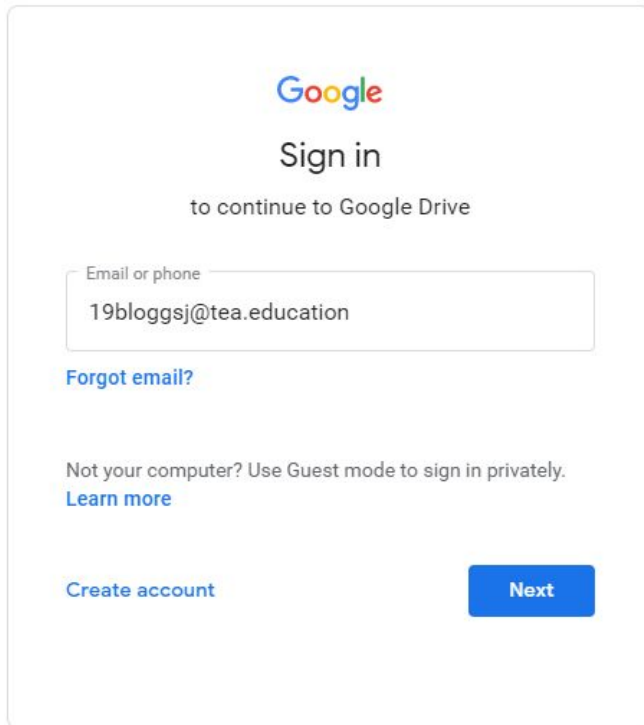
then please type in your your username as a full email address, like this:



The screenshot shows the RM Unify sign-in page. At the top, the logo reads "RM Unify Your Launch Pad to the Cloud". Below the logo is the heading "Sign In". There are two input fields: "Username or Email Address" and "Password". The "Username or Email Address" field contains the text "13test@elizabethan.notts.sch.uk", which is highlighted with a yellow border. Below the username field is a checkbox labeled "Remember my username". At the bottom of the form is a blue "Sign in" button. Below the button are two links: "Forgotten your password?" and "Find out about RM Unify".

- If you are asked to log into Google then your account name would be 19blogs@tea.education - just add **tea.education** onto your username - this has the

same password as your network account:



Google

Sign in

to continue to Google Drive

Email or phone

19bloggsj@tea.education

[Forgot email?](#)

Not your computer? Use Guest mode to sign in privately.
[Learn more](#)

[Create account](#) [Next](#)

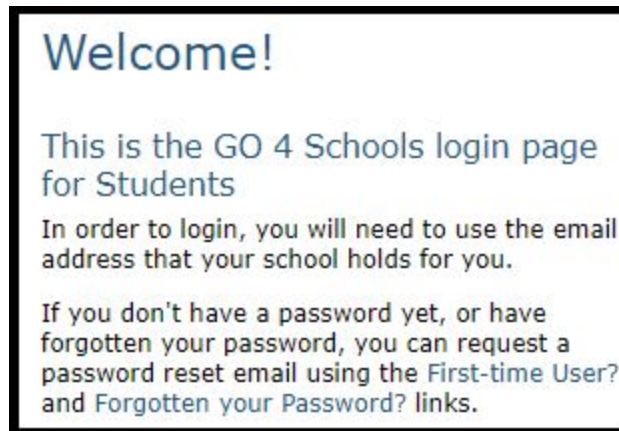
English (United States) ▾

[Help](#)

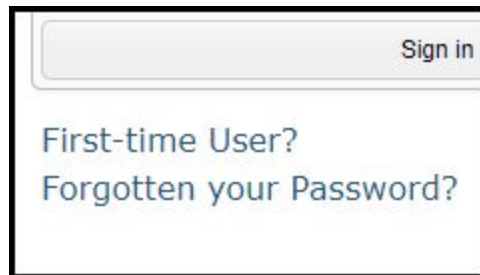
[Privacy](#)

[Terms](#)

- If you are struggling to login to Go4schools then please make sure that you are doing the following:
 - Check that you are using the login page for students:



- Check that the email address is the school one ([e.g. 13bloggsj@elizabethan.notts.sch.uk](mailto:13bloggsj@elizabethan.notts.sch.uk))
- Check that you are entering the Go4schools password - which is separate from your network one
- If you can't remember your password then click on the Forgotten Your Password? Link:



- This will send an email to your school email account that contains a link - copy this link and paste it into the address bar of the browser, this will then take you to a page to reset your Go4schools password
- If you have a problem you can email helpdesk@elizabethan.notts.sch.uk