

## Data Sheet

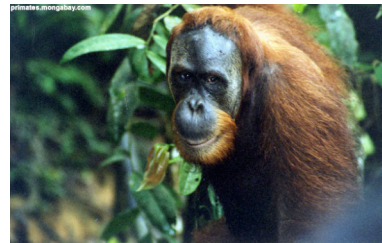
## Rainforest Facts



### The Disappearing Rainforests

In 1950 rainforests covered 15% of the Earth's land surface; now they cover 7% and experts estimate that in 40 years time rainforests could have almost disappeared. It is estimated that 137 species of plants and animals become extinct every day in the rainforest and that 22km<sup>2</sup> of rainforest are lost every hour.

Most of the deforestation is due to logging to sell wood and forest clearance to make room for farm land to grow soya beans and, more recently, palm-oil.



### Palm-oil Plantations

By 2005 the palm-oil industry had set up 65,000km<sup>2</sup> of oil-palm plantations across Sumatra and Borneo. It is projected that by 2020 the palm oil plantations will be three times this size.

Orang-utans which live in these forest areas are at risk of becoming extinct. It is estimated that the rate of decline is about 8% per year from a total current population of approximately 60,000.

## Questions

## Rainforest Facts

1

- (a) According to the data sheet how many species of plants and animals become extinct in one week?

-----.

- (b) How many km<sup>2</sup> of rainforest are lost in a week?

-----.

---

2

- (a) Since 1950 what percentage of the Earth's land surface has lost its rainforest ?

-----.

- (b) What percentage of the 1950 rainforest has now disappeared?

-----.

---

3

By 2020 how many km<sup>2</sup> of palm-oil plantations are there projected to be in Sumatra and Borneo?

----- km<sup>2</sup>

4

The table below shows the projected orang-utan population if it continues to decline at its current rate of 8% per year.

Complete the table for 2009 and 2010 rounding each figure to the nearest hundred

Year	Projected Population Rounded to the nearest hundred	Estimated decline Rounded to the nearest hundred
2007	60 000	4 800
2008	55 200	4 400
2009	50 800	
2010		

---

5

In the media large areas are often compared to the size of Wales.

The area of Wales is 20 000 km<sup>2</sup>.

Calculate how many days it takes to lose an area of rainforest the size of Wales.

days

-----

---