



SIXTH FORM

Course Directory
24-25

Welcome!

To The Elizabethan Academy Sixth Form course directory...

We are very proud of our Academy, of its academic traditions, extra-curricular opportunities, and pastoral support. Our students come first, as they are at the heart of everything we do. They are our biggest asset and best ambassadors.

Our core purpose in the Sixth Form, is to prepare students for the next steps in their lives and equip them with the qualifications, confidence, skills and attributes to become high achieving well-rounded individuals; thus, enabling them to reach their potential and achieve their aspirations and goals. I believe that the quality of teaching you will receive, the extensive opportunities from Duke of Edinburgh, cadets, work and leadership experiences are second to none.

I am delighted that we have extended our curriculum offer this year to include more technical and vocational courses, including the new T Level qualification so students can pursue an academic, vocational or combined route.

We ensure students in Year 12 and 13 receive the pastoral support they need to thrive, whether it is help with securing university places, apprenticeships, careers advice, or support with organisation of their studies. It has grown from strength to strength and made a huge contribution the school. I hope you too will enjoy being an integral part of our academy and take advantage of all it has to offer.



T Level

Digital Production, Design & Development

(Equivalent to 3 A-Levels)

Students will develop an understanding of:

- i) How digital technologies impact business
- ii) The ethical and moral implications of digital technology
- iii) Using data in software design
- iv) Using digital technologies to analyse and solve problems
- v) Digital environments, including physical, virtual and cloud environments
- vi) Emerging technical trends, such as Internet of Things (IoT), Artificial Intelligence (AI), Augmented Reality (AR), Blockchain, 3D printing
- vii) The privacy of personal data
- viii) Planning digital projects
- ix) Testing software, hardware and data
- x) Digital tools for project management and collaboration

Special features of the course:

The industry placement is a key part of a T Level course, giving students the chance to put into practice the skills and knowledge students have learnt in the classroom. Employers of all sizes are being invited to provide an industry placement as part of a T Level.

These last for a minimum of 45 working days. This two year course has been developed in collaboration with employers and businesses so that the content meets the needs of industry and prepares students for work.

Students will be assessed by:

All elements of the course will be externally assessed through a combination of exams, case studies and projects.

Career pathways:

Network Engineer, Software Engineer, Web Developer, Technical Support, App Developer, Data Analyst

Entry Requirements

Grade 4
(or
above) in
GCSE
English
and
Maths

Applied Science

Level 3 National | Edexcel Extended Certificate

Students will build upon their GCSE knowledge and understanding of biology, chemistry and physics, by using their investigative skills to perform different scientific procedures across the three disciplines. Students will also study science in a real-world context, preparing them for future work in this area.

Course content

Mandatory units:

- Principles and applications of science
- Practical scientific procedures and techniques
- Science investigation skills

Optional units:

- Physiology of human body systems
- Human regulation and reproduction
- Genetics and genetic engineering

Students will be assessed by:

All elements of the course will be externally assessed through a combination of exams, case studies and projects.

Career pathways:

Nursing, Teaching, Lab Technician, Forensics, Sports Science, Food Science

Entry
Requirements

Grade 4
(or
above) in
GCSE
Science,
English
and Maths



Biology

A-Level | ocr

Biology, inspired by the living world around us, with content relevant to real world experiences. An interesting and inspiring course, A Level Biology is a stepping stone to higher education. The course will nurture students' passion for Biology and lay the groundwork for further study in courses such as biological sciences and medicine.

Students will develop skills and enhance their understanding of the living world and they will also gain analytical skills, and develop their scientific enquiry and problem-solving skills.

Course content

- Biological Molecules
- Cells
- Organisms exchange substances with their environment
- Genetic information, variation and relationships
- Energy transfer, in and between organisms
- Organisms respond to changes in their environment
- Genetics, Populations, Evolution and Ecosystems

Students will be assessed by:

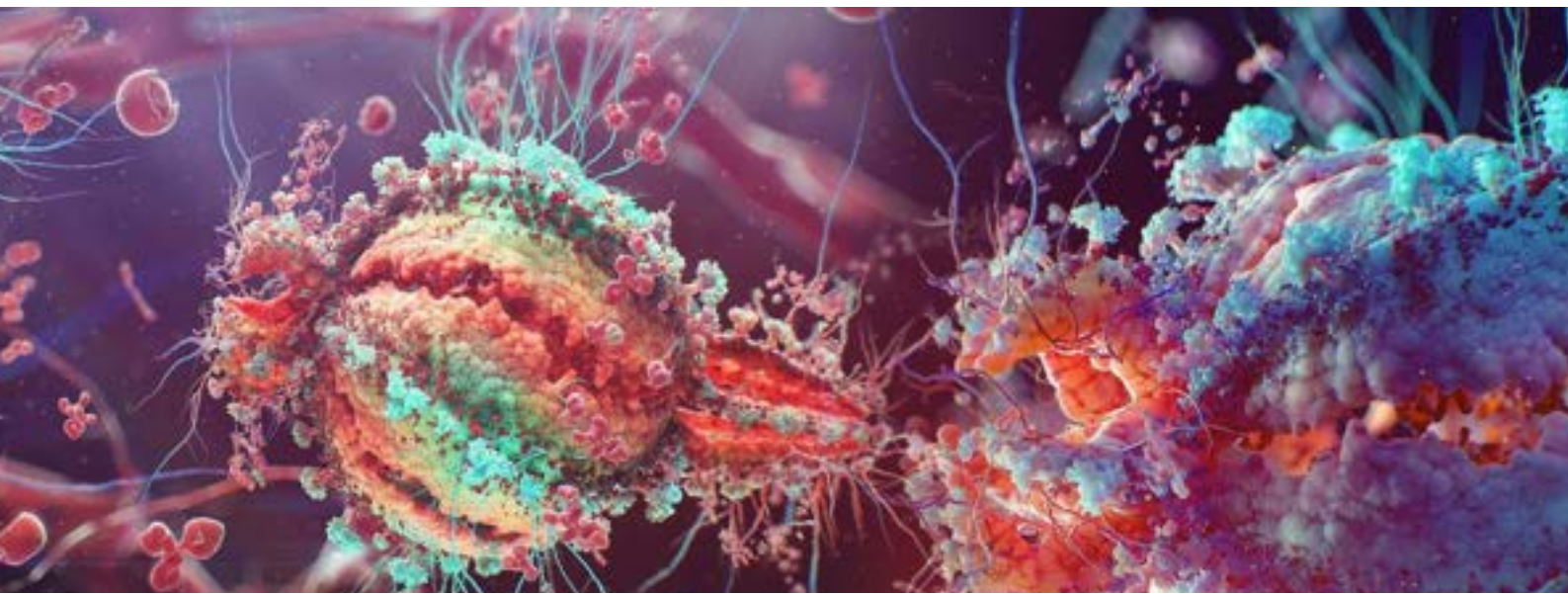
Examinations, practical skills, demonstrating knowledge of both theory, and practical skills.

Entry
Requirements

Grade 5-6 in
Combined
Science,
grade 5 in
Maths
or
grade 6 in
Biology

Career pathways:

Medicine, Zoology, Life Sciences, Veterinary Science,
Biochemistry



Chemistry

A-Level | aqa

A-level Chemistry attempts to answer the big question 'what is the world made of' and it's the search for this answer that makes this subject so fascinating. From investigating how one substance can be changed drastically into another, to researching a new wonder drug to save millions of lives, the opportunities that chemistry provides are endless.

Course content

- Atomic Structure
- Bonding
- Thermodynamics
- Organic Synthesis
- Amino Acids, Proteins and DNA
- Spectroscopy (NMR and IR)
- Electrochemical cells
- Acids, bases and buffers
- Kinetics in chemical reactions
- Equilibria in reversible reactions

Students will be assessed by:

Examinations and 12 required practical skills.

Career pathways:

Medicine (A Level Chemistry is a must have!), Analytical Chemist, Chemical Manufacturing, Forensics, Environmental Protection, Dentistry

Entry
Requirements

Grade 6-5 in
Combined
Science and
grade 5 in
Maths or
grade 6 in
Chemistry



Physics

A Level | ocr

The course will challenge students intellectually and they will take an active role in the consideration of phenomena and the physical world around us.

Students will become more adept at problem solving and showing analytical skills, and enjoy learning the subject using a range of methods and techniques.

Course content

- Development of practical skills in physics
- Foundations in physics
- Forces and motion
- Electrons, waves and photons
- Newtonian world and astrophysics
- Particles and medical physics

Students will be assessed by:

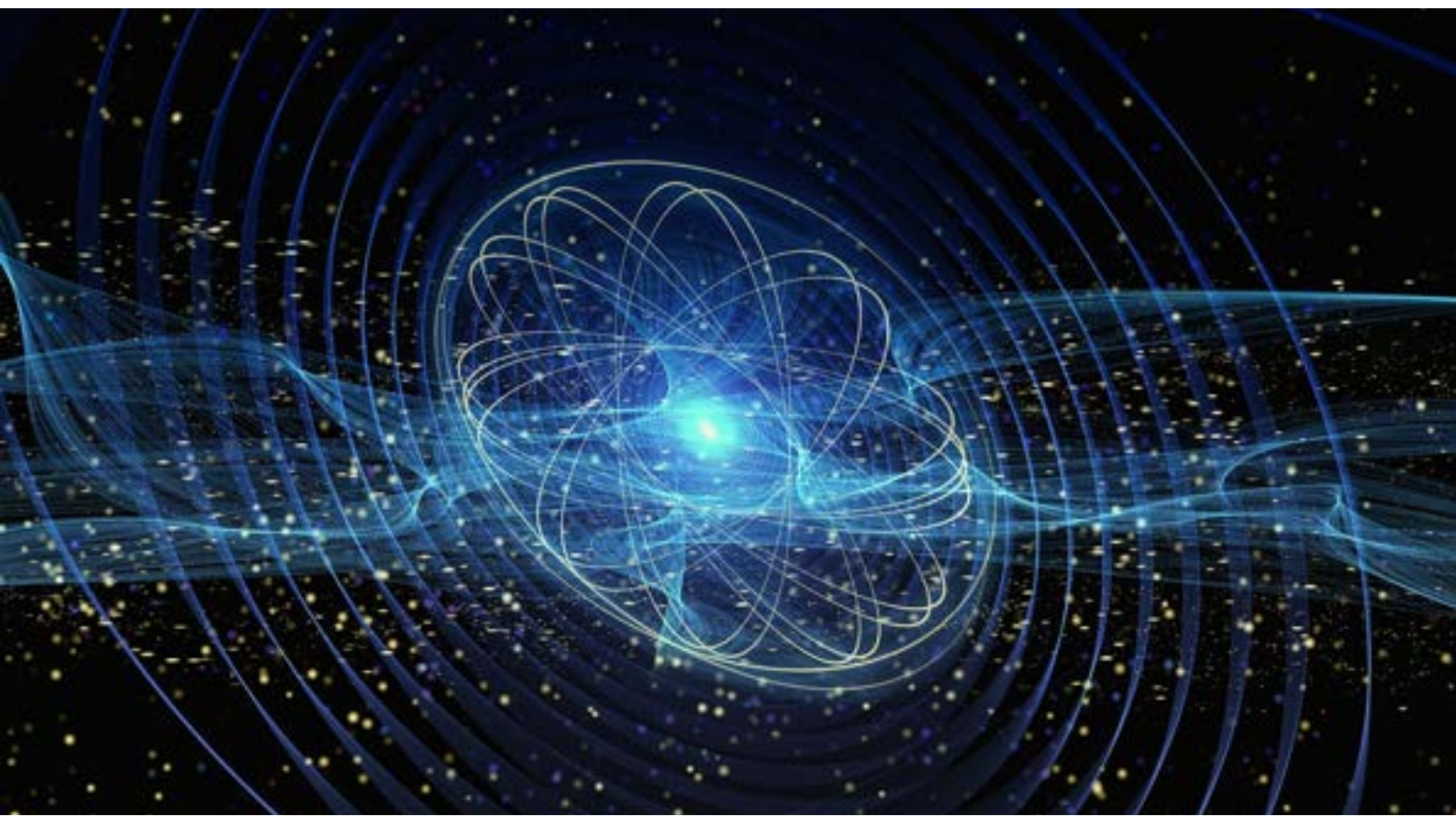
Examinations, practical skills, and demonstrating knowledge of both theory and practical skills.

Career pathways:

Engineering, Medical Physics, Scientific Researcher, Project Management, Electronic Engineer

Entry Requirements

Grade 6-5 in Combined Science and grade 5 in Maths or grade 6 in Physics and grade 5 in Maths



Art & Design: Fine Art

Entry
Requirements

A-Level | Eduqas

A Level Fine Art is an introduction to a variety of experiences which explore a range of Fine Art Media, processes and techniques. It will help students to develop personal visual responses to ideas, observations, environments and cultures, using practical, critical and contextual thinking. It provides students with a good grasp of a range of traditional and new media.

Grade 5 Art & Design

Students without a GCSE in Art & Design, would be considered via a portfolio and discussion with the subject leader.

Course content

Practical Portfolio - students produce a portfolio of work from starting points, topics or themes.

- The focus is on including work that shows exploration, research, acquisition of techniques and skills.
- Students must produce and submit practical work that shows evidence of working from at least two forms of Fine Art Media.

Personal Investigation - A major project identified by the student, including a related personal study of up to 3,000 words.

Externally Set Task:

- Candidates select one starting point from an externally set range of topics.
- In 15 hours of controlled examination time, candidates work to plan and then realise ideas into a final outcome.

Students will be assessed by:

Building a portfolio, written essays and a 10-hour examination.

Career pathways:

Artist, Architecture, Illustration, Media, Photography, Sculpture



Business Studies

A-Level | Pearson

A-Level business studies equips students for real life experiences they will face throughout their career. A stimulating course allowing students to develop a range of skills, including budgeting and financial stability, which can be supported through real life business examples.

It is an opportunity for students to get as involved with a subject as they wish, through relevant news articles supporting the key themes and knowledge discussed in lessons; a subject where learning never ends. A forward-thinking subject which engages, motivates and ensures all learners are able to analyse all types of businesses.

Course content

- Understanding the nature and purpose of business
- Understanding different businesses form
- Manager, leadership and decision making
- Decision making to improve marketing, operational, financial and HR performance
- Analysing strategic position Strategic direction, how to pursue strategies and strategic change

Students will be assessed by:

Examinations.

Career pathways:

Management, Marketing, Finance, Human Resources, Teaching

Entry
Requirements

Grade 6 in
GCSE
Business
studies and
grade 5 in
English and
Maths



Dance

A-Level | aqa

Dance is an exciting and diverse subject. This dynamic qualification encourages students to develop their creative, physical, emotional and intellectual capacity. This course reflects both current and historical dance practices, and teaches critical thinking, through professional dance works. Students will improve their own technical ability and will have the opportunity to perform and choreograph in a variety of dance styles.

Entry
Requirements

Grade 6 in
GCSE Dance
(or an
equivalent
qualification)
and grade 5 in
English and
Maths

Course content

This course will require students to develop, demonstrate and articulate practical and theoretical knowledge, understanding and experience of:

- Technical performance skills
- The process and art of choreography
- The interrelationship between the creation, presentation and viewing/appreciation of dance works
- The development of dance placed within an artistic and cultural context
- Professional dance works and the significance of those works
- Subject specific terminology and its use

Students will be assessed by:

Practical examination and written examination.

Career pathways:

Performer, Choreographer, Dance Teacher, Dance Administration and Management, Dance Movement Therapies



Drama & Theatre

A-Level | eduqas

Drama & Theatre Studies is geared to exploring a wider range of drama content, including more contemporary practitioners/theatre groups, making study more relevant to students wanting to pursue a career in this field.

It develops confidence and communication skills and, as such, it can be recommended for many occupations that will require these skills.

Course content

- Devising theatre
- Theatre text in performance
- Theatre makers in practice

Students will be assessed by:

Examination and coursework.

Career pathways:

Acting, Directing, Writing, Stage Management, Technical Theatre (Lighting, Sound and Design)

Entry
Requirements

Grade 6 in
GCSE Drama
and grade 5 in
English and
Maths



Film Studies

A-Level | eduqas

This course is ideal for students who want to explore how and why films are made. A Level Film Studies focuses on the analysis and deconstruction of film, over a wide historical time frame. It allows students to engage with films, from early silent cinema to 1930s Hollywood films, to contemporary and experimental cinema. A passion for a wide range of cinema is essential for success in Film Studies A Level, but it is not necessary to have studied either Film or Media at GCSE. It is an academic subject and suits students who have flourished in essay-based subjects like English Literature or History.

Course content

A Level Film Studies involves studying 12 different films. These are separated into set categories, namely; American, British, Independent, Global, Documentary, Experimental and Silent Film. These are analysed via a number of different study area frameworks, including: film form, meaning and response. Students will also study how to write and format professional screenplay, and develop their own screenplay and photographic storyboard for a short movie.

Students will be assessed by:

Examinations and creative projects.

Career pathways:

Creative Writing for TV/Film, Production roles in TV and Film Industry: including Directing, Editing and Cinematography, Technical roles within TV and Film including Camera Operators, Sound and Special Effects

Entry
Requirements

Grade 5 in
GCSE English
and Maths



Music

A Level | eduqas

This course aims to nurture and develop a lifelong love of music, which is one of the most individual form of self-expression. The A Level will be delivered through activities which combine the three main areas of music: Performance, Composition and Appraisal. Music students are open minded and interested; they have a talent for performance and a commitment to practice, and additional instrumental lessons. Our A-Level musicians are often the backbone of our performances at The Elizabethan, and have helped us to achieve the prestigious Gold Arts Mark Award. Many of our former students have maintained links with us.

Course content

- Performance– a short solo recital
- Composition– Two compositions, one free, the other to a set brief
- Appraisal– listen to, study, analyse and research set works from a variety of areas of study

Students will be assessed by:

Examinations, compositions and performances.

Career pathways:

Composing, Event Management, Performing, Teaching

Entry
Requirements

Grade 6 in
GCSE Music
and grade 5 in
English and
Maths



Media Studies

A Level | eduqas

This course aims to develop a critical response to the media by exploring a wide variety of media, drawing on fundamental media concepts and theoretical framework.

Students will gain an understanding of how media products are constructed; why the producers of a text are important in media industries; how audiences are grouped and targeted, how the digital revolution allows us to become producers ourselves and how the representation of people, places and events is evident in media.

Course content

Component 1:

Media Products

Component 2:

Media Forms and Products in depth

Component 3:

Cross Media Production

Students will be assessed by:

Examinations and coursework.

Career pathways:

Media Planner, Programme Researcher,
Broadcasting / Film / Video, Social Media / Web Manager,
Advertising Account Executive, Event Manager / Film Director,
Magazine Journalist

Entry
Requirements

Grade 6 in
GCSE English
and grade 5 in
Maths



Photography

A Level | eduqas

Do you want to be part of one of the fastest growing industries in the UK? Studying photography has many benefits – it can help students enormously in their other studies by creating image and text lay-outs and in decoding the meaning within images. The study of photography can lead to a wide range of employment opportunities within media, commercial photography or academia.

Course content

Students should be able to explore, research and acquire techniques and develop their skills, knowledge and understanding in a range of photographic media.

Students should explore relevant images, artefacts and resources relating to traditional and /or digital photography. Students may use traditional methods such as photographic film and/or digital techniques to produce images.

Students in Photography are expected to demonstrate specialisation in particular media or processes, to allow an appropriate depth of study.

Students will be assessed by:

Examinations.

Career pathways:

Advertising, Film and Photography, Animation, Media

Entry
Requirements

Grade 5 in GCSE
Photography

Students without
a GCSE in
Photography, will
be considered via
a portfolio and
discussion with
the Faculty
Leader.



Computer Science

A-Level | ocr

Computer Science is a practical subject where students can apply the academic principles learned in the classroom to real-world systems. It's an intensely creative subject that combines invention and excitement, and can look at the natural world through a digital prism.

Course content

- The characteristics of contemporary processors input, output and storage devices
- Software and software development
- Exchanging data
- Data types, data structures and algorithms
- Legal, moral, cultural and ethical issues
- Elements of computational thinking
- Problem solving and programming
- Algorithms to solve problems and standard algorithms

Students will be assessed by:

Examinations and controlled assessment.

Career pathways:

Software Engineer, Coder, Programmer, Web Developer, IT Analyst, Teacher

Entry
Requirements

Grade 6 or
above in GCSE
Computing



Design & Technology

A Level | aqa

Design & Technology is closely related to both GCSE Product Design, and Engineering. Students following this route should have a strong interest in general product design, as during the course, students will have the opportunity to produce fully functional, creatively designed products using a range of materials.

Students also have the opportunity to be experimental and design products which, at present, do not exist using a wide range of modern materials.

Course content

Product Design requires students to engage in both practical and theoretical studies. The specification requires students to have knowledge in these two key areas:

- Technical principles
- Designing and making principles

Students should develop the ability to draw on, and apply, a range of skills and knowledge from other subject areas to inform their decisions in design and the application or development of technology.

Students will be assessed by:

Building a portfolio, written essays and a 10-hour examination

Career pathways:

Artist, Architecture, Illustration, Media, Photography,
Sculpture

Entry
Requirements

Grade 6 in GCSE
Product Design
or Engineering
and grade 5 in
English and
Maths



Maths

A Level | aqa

Mathematics is a skill which is used almost everywhere, a good A Level in mathematics can make it easier for students to step into their dream career. Employers and Universities value mathematicians, it is a subject which requires students to have determination and commitment, together with high levels of academic ability.

Course content

Pure mathematics:

- Proof
- Algebra and functions
- Coordinate geometry
- Sequences and series
- Trigonometry
- Exponentials and logarithms
- Differentiation
- Integration

Mechanics:

- Vectors
- Quantities and units in mechanics
- Kinematics
- Forces and Newton's laws

Statistics:

- Statistical sampling
- Data presentation and interpretation
- Probability
- Statistical distributions
- Statistical hypothesis testing

Students will be assessed by:

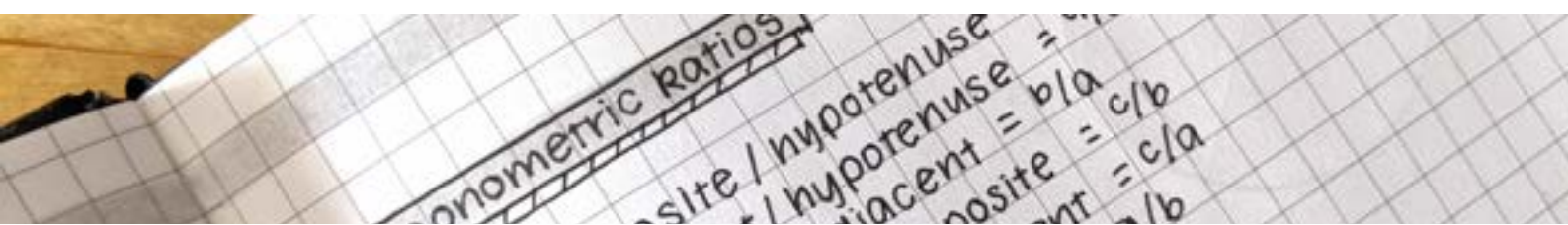
Examinations.

Career pathways:

Mathematics, Engineering, Accountancy, Sciences,
Business Management

Entry
Requirements

Grade 6 in
GCSE Maths
and grade 5 in
English



Further Maths

A Level | aqa

This course will appeal to students if they are interested in, and have the ability to study Further Maths. If students would like to pursue maths at University, a pathway which will have demanding mathematical content, this course will develop their knowledge, giving them a clear understanding of mathematics and mathematical processes in a way that promotes confidence and fosters enjoyment. Students will develop abilities to reason logically and recognise incorrect reasoning, to generalise and to construct mathematical proofs.

Course content

Further Pure:

- Algebra
- Differentiation
- Integration
- Complex numbers
- Graphs
- Matrices

Decision Maths:

- Devising algorithms
- Graph theory
- Networks
- Linear programming

Students will be assessed by:
Examinations.

Career pathways:

Engineering, Accountancy, Sciences, Business
Management

Entry
Requirements

Grade 7 in
GCSE Maths
and grade 5 in
English

$$\int T(x) \cdot \frac{\partial}{\partial \theta} f(x, \theta) dx = M \left(T(\xi) \cdot \frac{\partial}{\partial \theta} \ln L(\xi, \theta) \right)$$
$$\left(\frac{\partial}{\partial \theta} \ln L(x, \theta) \right) \cdot f(x, \theta) dx = \int T(x) \cdot \left[\frac{\frac{\partial}{\partial \theta} f(x, \theta)}{f(x, \theta)} \right] \cdot f(x, \theta) dx$$

Mathematical Studies

Level 3 | aqa: 1 year course certificate

Core Maths is for students who achieved at least a Grade 4 at GCSE mathematics and wish to develop their practical skills, so they may apply these in work, study or everyday life. Core Maths can be a valuable qualification to support students studying Biology, Business, Chemistry, Geography, Health and Social Care and Sociology. Core Maths is a one-year course which compliments many of the other Level 3 courses on offer. It carries UCAS points equivalent to an AS Level and is favoured by Universities and Employers.

Course content

Compulsory content:

- Analysis of data
- Maths for personal finance
- Estimation
- Critical analysis of data models

Optional Content:

- Cost benefit analysis
- Graphical methods
- Rates of change

Students will be assessed by:

Examinations.

Career pathways:

Finance, Social Sciences, Social Work, Psychologist,
Banking, Nursing

Entry
Requirements

Grade 4 in
GCSE Maths
and grade 4 in
English



English Language

A-Level | aqa

English language is all around us, always changing, never static and incredibly powerful. It can be used to bring communities together, it can be used to incite violence, and it can be used to paint striking images.

This course will enable students to understand where the English language has come from, how it has changed over time, how we learn it and how it is used. It will also give students the tools needed to become a skilled writer and allow them to use language to persuade, inform, instruct and entertain – skills necessary for whichever career path students decide to take.

Course content

- Textual variations and representations
- Children's language development
- Language diversity and change
- Language discourses
- Writing skills
- Language Investigation

Students will be assessed by:

Written examination, a language investigation and a piece of original writing.

Career pathways:

Artist, Architecture, Illustration, Media, Photography, Sculpture

Entry
Requirements

Grade 6 in
GCSE English
Language and
grade 5 in
Maths



English Literature

A-Level | aqa

Students will study AQA English literature specification A. This course is holistic and has a historicist approach. No texts are studied in isolation and there are shared contexts across the eight texts students will study. This means that students will be submerged in to love and war, learning to understand the texts, their themes and how they have been perceived over time. Students will draw out patterns of similarity and difference using different reading strategies, engaging with a variety of perspectives. Students will also debate and challenge different interpretations of other readers, whilst forming their own.

Course content

- Love across the ages
- World War One and its aftermath
- Shakespeare
- Modern drama
- Poetry
- Teaching
- Law
- Heritage and contemporary novels

Students will be assessed by:

Written examination and coursework.

Career pathways:

Teaching, Law, Media, PR and Advertising, Management

Entry
Requirements

Grade 6 in
GCSE English
Language and
grade 5 in
Maths



Geography

A Level | aqa

“Geography is the subject which holds the key to our future”- Michael Palin.

A Level Geography is one of the most relevant subjects you could choose to study, and there has never been a better or more important time to study A Level Geography. Dealing with vital issues such as urban change, migration, environmental degradation, social issues and natural hazards, our students enjoy the scope of the material they cover in geography, the insights it can provide into the world around us and the highly contemporary nature of the issues it tackles.

Course content

Physical geography, which includes:

- Water and carbon cycles
- Coastal systems
- Natural hazards

Human geography, which includes:

- Global systems
- Changing places
- Contemporary urban environments

Students will be assessed by:

Written examinations, independent fieldwork and investigation.

Career pathways:

Cartographer, Commercial/Residential Surveyor, Environmental Consultant, Geographical Information Systems Officer, Planning and Development, Surveyor, Teacher, Town Planner

Entry
Requirements

Grade 6 in
GCSE
Geography
and grade 5 in
English and
Maths



History

A Level | aqa

History develops students' understanding of the past and provides them with an overview of the change and continuity in human history. Our range of units allows students to explore key areas of political and social history in Britain, Europe and the wider world. The course will help students develop essential transferable skills such as communication, analysis, interpretation and evaluation.

History challenges students intellectually; developing their knowledge and understanding of social, political, economic and religious themes that are still relevant in the 21st century. History encourages students to take an active role in their own learning and the varied ways in which the course is delivered helps them to enjoy their learning, as well as improving their understanding of how today's world came to be.

Entry
Requirements

Grade 6 in
GCSE History
and grade 5 in
English and
Maths

Course content

Breadth study:

- Tsarist and Communist Russia, 1855–1964

Depth study:

- The English Revolution 1625–1660

Historical investigation:

- In depth study of a subject of student's choice

Students will be assessed by:

Examinations and coursework.

Career pathways:

Historian, Archaeology, Journalism, Publishing,
Archivist, Law



Mfl – French

A Level | aqa

A course in one of the Modern Languages prepares students for the world of work and travel, both linguistically and by providing them with the many skills inherent in any 'Arts' A Levels, such as essay and report writing. There are opportunities to go abroad during the two-year course. Universities and Employers welcome a language qualification combined with anything from Accountancy and Law, to Mathematics or the Sciences, as Modern Languages are seen as a 'facilitating' subject.

Course content

- Social issues and trends
- Political and artistic culture
- Grammar
- Literary texts and films

Students will study either one text and one film, or two texts from a prescribed list and they must also complete an individual research project, which relates to a country or countries where French is spoken.

Students will be assessed by:

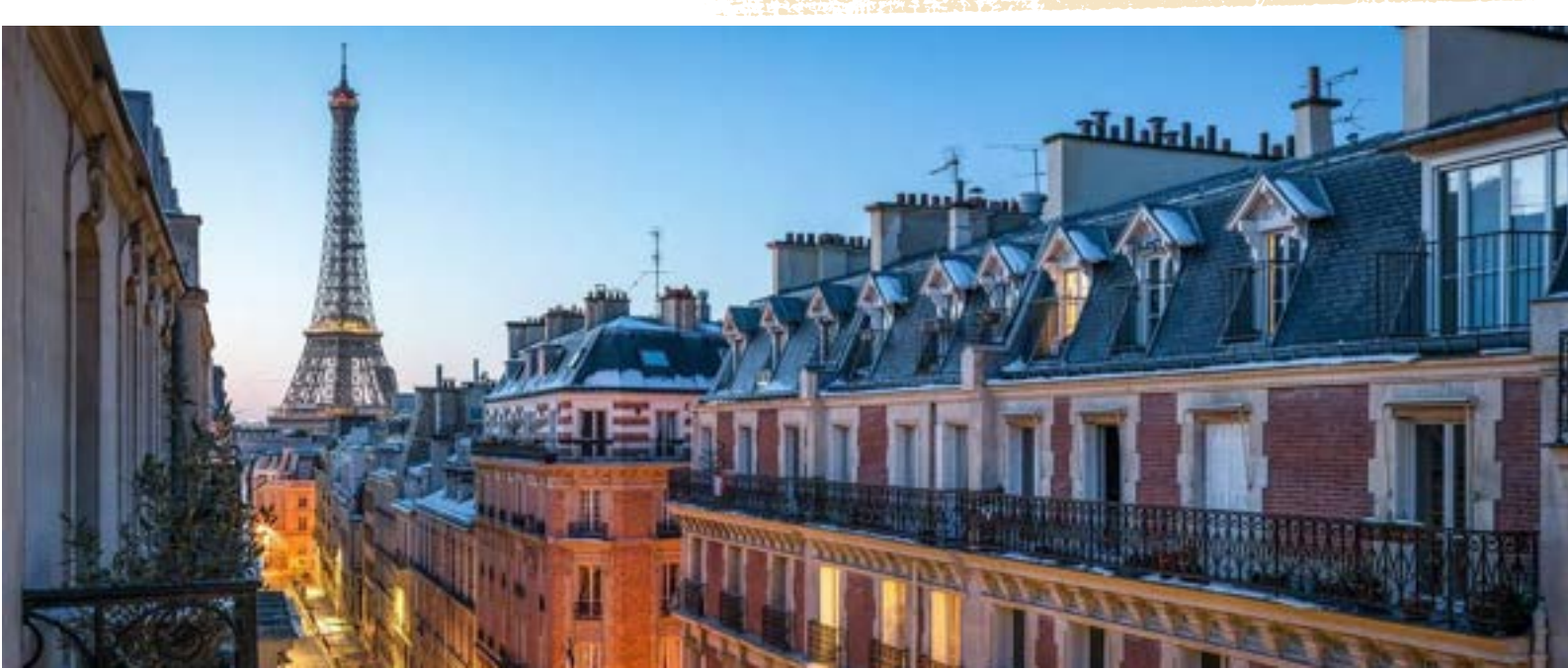
Listening examination, speaking examination, reading and writing examination.

Career pathways:

Business, Civil Service, Journalism, Law, Publishing, Translations, Travel and Tourism, Teaching

Entry
Requirements

Grade 6 in
GCSE French
and grade 5 in
English and
Maths



Mfl – German

A Level | aqa

A course in one of the Modern Languages prepares students for the world of work and travel, both linguistically and by providing them with the many skills inherent in any 'Arts' A Levels, such as essay and report writing. There are opportunities to go abroad during the two-year course. Universities and Employers welcome a language qualification combined with anything from Accountancy and Law, to Mathematics or the Sciences, as Modern Languages are seen as a 'facilitating' subject.

Entry
Requirements

Grade 6 in
GCSE German
and grade 5 in
English and
Maths

Course content

- Social issues and trends
- Political and artistic culture
- Grammar
- Literary texts and films

Students will study either one text and one film, or two texts from a prescribed list and they must also complete an individual research project, which relates to a country or countries where German is spoken.

Students will be assessed by:

Listening examination, speaking examination, reading and writing examination.

Career pathways:

Business, Civil Service, Journalism, Law, Publishing,
Translations, Travel and Tourism, Teaching



Mfl – Spanish

A Level | aqa

A course in one of the Modern Languages prepares students for the world of work and travel, both linguistically and by providing them with the many skills inherent in any 'Arts' A Levels, such as essay and report writing. There are opportunities to go abroad during the two-year course. Universities and Employers welcome a language qualification combined with anything from Accountancy and Law, to Mathematics or the Sciences, as Modern Languages are seen as a 'facilitating' subject.

Entry
Requirements

Grade 6 in
GCSE Spanish
and grade 5 in
English and
Maths

Course content

- Social issues and trends
- Political and artistic culture
- Grammar
- Literary texts and films

Students will study either one text and one film, or two texts from a prescribed list and they must also complete an individual research project, which relates to a country or countries where Spanish is spoken.

Students will be assessed by:

Listening examination, speaking examination, reading and writing examination.

Career pathways:

Business, Civil Service, Journalism, Law, Publishing,
Translations, Travel and Tourism, Teaching



Philosophy & Ethics

A Level | ocr

We live in a multi-ethnic and changing society. Religion, Philosophy and Ethics have never been so key and relevant in today's world and to the way we act and think. Most religions and beliefs offer answers to life's deepest questions, and this A Level will give students the opportunity to explore and challenge assumptions and theories as well as improving their logical and critical thinking.

Course content

- Philosophy of religion - including ancient philosophical influences, the nature of the soul, mind and body and arguments about the existence or non-existence of God.
- Religion and ethics - including normative ethical theories, debates surrounding the significant idea of conscience and sexual ethics and the influence on ethical thought of developments in religious beliefs.
- Developments in religious thought - all in the context of Christianity.

Students will be assessed by:

Written examinations (three x 2 hours).

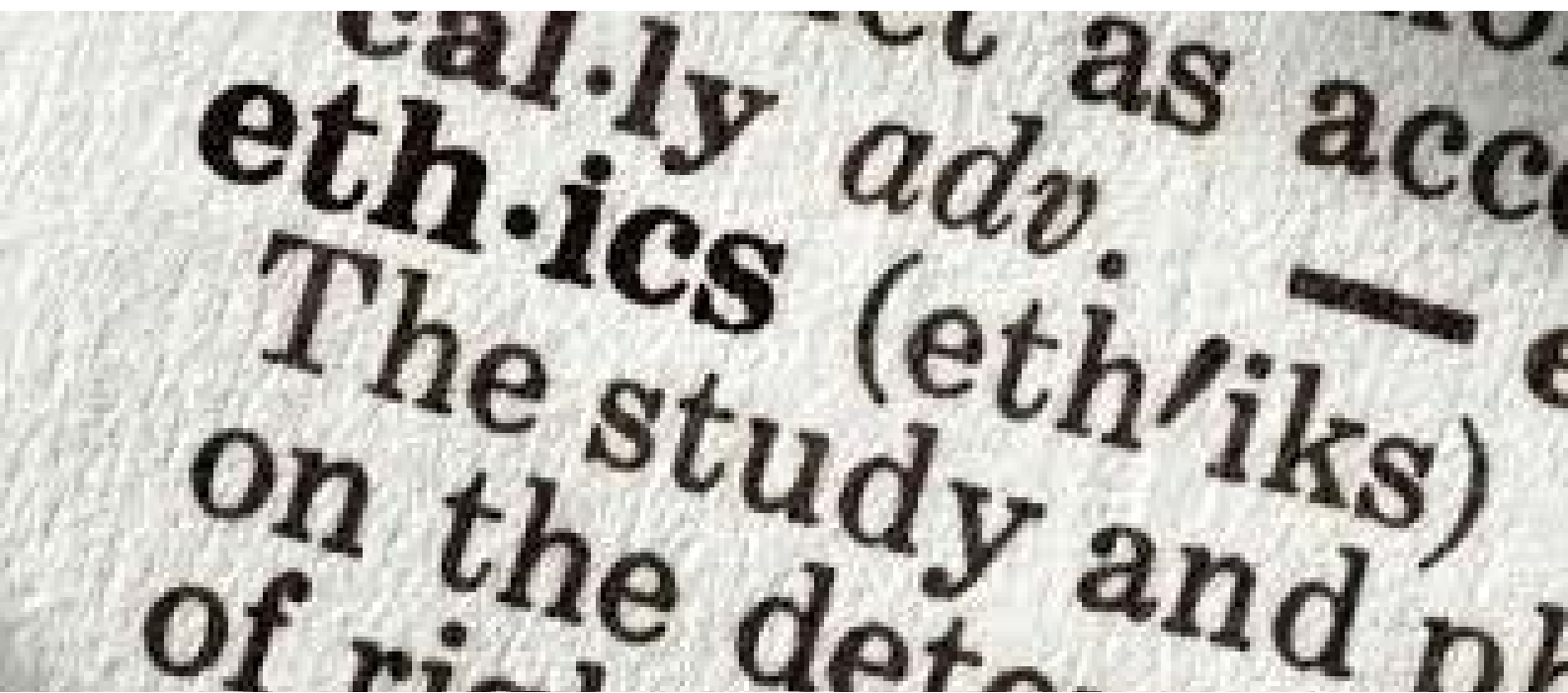
Career pathways:

Teaching, Politics, Communications, Publishing, Human Resources, Advertising, Law, Aid/Humanitarian Worker

Entry
Requirements

Grade 5 in
GCSE English

This course
would also be
very suited to
those
interested in
English, Social
Sciences and
History.



Food Science & Nutrition

Level 3 Applied | wjec/eduqas

The course offers experiences through applied learning which links to the Food Production industry. An understanding of food science and nutrition is relevant to many industries and job roles. Care providers and Nutritionists in hospitals use this knowledge, as do Sports Coaches and Fitness Instructors. Hotels and restaurants, Food Manufacturers and Government Agencies also use this understanding to develop menus, food products and policies that support healthy eating initiatives. Many employment opportunities within the field of Food Science and nutrition are available to graduates. This course is designed to support students progressing to University, who are wishing to pursue careers or learning in related areas such as the food industry production.

Course content

Unit1- Meeting nutritional needs of specific groups

Unit2-Ensuring food is safe to eat

Unit3-Experimenting to solve food production problems

Students will be assessed by:

Examinations, coursework and including cooking sessions.

Career pathways:

Nutritionist, Chef, Food Labelling Specialist, Food Technology

Entry
Requirements

Grade 4 or
above in GCSE
English and
Maths



Health & Social Care

Level 3 Cambridge Technical | ocr extended certificate

This course will develop students' knowledge base for working with people in every stage of their lives and how their own experiences relate to health and wellbeing. Students will look at the range of roles and general responsibilities and relationships of people who work in Health and Social Care and will study different aspects of the Health and Social Care sectors, which will help prepare them for future career opportunities.

Course content

Mandatory Units:

- Building positive relationships in Health and Social Care
- Equality, Diversity and Rights in Health and Social Care
- Health, Safety and Security in Health and Social Care
- Anatomy and Physiology in Health and Social Care

Optional Units:

- Sexual Health, Reproduction and Early Development
- Public Health

Students will be assessed by:

Examinations and internal assessments.

Career pathways:

Nursing, Social Work, Teaching, Police Force

Entry
Requirements

Grade 4 or
above in GCSE
English and
Maths



Psychology

A Level | aqa

If you are interested in people and human behaviour, then this course is for you. Psychology is the scientific study of the human mind and behaviour. Studying the course will enable students to develop a sound understanding of the leading approaches and key research areas in psychology. The course involves scientifically-based research, theory and research methods. Students will also develop their communication, analysis, interpretation and evaluation skills. Techniques and skills developed through studying psychology can be applied across a wide range of other subjects, including arts, social sciences and traditional sciences. The associated career pathways are endless.

Course content

- Introductory topics in psychology
- Psychology in context
- Issues and options in psychology

Students will be assessed by:

Examinations.

Career pathways:

Clinical Psychologist, Educational Psychologist, Research Psychologist, Law, Journalism, Nursing, Teaching, Social Sciences

Entry
Requirements

Grade 6 in GCSE
Psychology and
grade 5 in
English and
Maths



Sociology

A Level | aqa

Through the study of Sociology, students get the opportunity to learn the fundamentals of this very engaging subject. It develops skills such as independent thinking, critical analysis and research and the opportunity for theoretical debate.

The course will both inspire and challenge various views of the world in which we live and will act as a stepping stone to higher education and the world of work.

Course content

Compulsory units:

- Education with theory and methods
- Crime and deviance

Optional units:

- Culture and Identity
- Families and households
- Health
- Work, Poverty, Welfare
- Beliefs in society
- Media

Students will be assessed by:

Examinations.

Career pathways:

Sociology Degree, Advice Worker, Law, Social and Community Work, Police, Health Service

Entry
Requirements

Grade 6 in GCSE
Sociology and
grade 5 in
English and
Maths



Criminology

A-Level Applied | wjec.eduqas

The course is focused around developing an understanding of different types of crime, influences on perceptions of crime and why some crimes are unreported. Students will also explore why people commit crime, and develop an understanding of the criminal justice system, from the moment a crime has been identified to the verdict. This will develop the understanding and skills needed to examine information in order to review the justice of verdicts in criminal cases. Because it is an applied course, the learning always relates to authentic case studies.

Course content

- Changing awareness of crime
- Criminological theories
- Crime scene to courtroom
- Crime and punishment

Students will be assessed by:

Examinations and controlled assessment.

Career pathways:

Further study in BA Criminology and Criminal Justice, National Probation System, Courts and the Tribunal Service, National Offender, Management Service, police and Law Career

Entry
Requirements

Grade 4 or
above in GCSE
English and
Maths



Uniform Protective Services

Entry
Requirements

Level 3 National | Pearson extended certificate

This qualification is designed to support those students who want an introduction to the uniformed protective services sector. It supports progression to higher education as part of the a programme of study that includes other appropriate BTEC Nationals or A Levels.

Grade 4 or above
in English and
Maths

Course content

20 Units of study covering a wide range of public sectors including:

- Police powers and the law
- Criminology
- Citizenship and Diversity
- Global Affairs
- Teamwork, Leadership and Communication
- Responding to emergency incidents
- Expedition Skills

Students will be assessed by:

Written examinations, internal assessments, and minations internal assessments.

Career pathways:

Sociology, Psychology, Politics, Law, Police, Armed Forces



Physical Education

A Level | ocr

Students are introduced to a wide range of topics and concepts enabling them to fully experience the subject. This gives a good clear basis for those who wish to build on this in further education. Students also get to see where they fit in with physical activity and sport and how to improve their performance either as a coach or a performer.

Course content

- Physiology
- Psychological factors affecting performance
- Socio-cultural issues in physical activity and sport
- Performance in physical education (NEA)

Students will be assessed by:

Written examinations, internal assessments, and minations internal assessments.

Career pathways:

Broadcasting, Coach, Events Management, Exercise and Fitness Instructor, Nutritionist, P.E Teacher, Performance Analyst, Physiotherapy, Referee

Entry Requirements

Grade 6 in GCSE P.E or level 2 merit in Sports Studies and grade 5 in English and Maths



Sport Studies

Level 3 | Pearson extended certificate

Entry
Requirements

Grade 4 in
English and
Maths, and level 2
Pass in Sports
Studies

Students who study BTEC Sport, develop an incredibly well-rounded understanding of the sports industry.

Learning is developed on what the students may have done before at GCSE and prepares them well for higher education courses or work within the sports industry. This course can be studied alongside other A Level or Applied courses.

Course content

- Anatomy & Physiology
- Fitness Training & Programming for Health, Sport and Wellbeing
- Professional Development in the Sports Industry
- Further Optional Units

Students will be assessed by:

Written examinations and coursework style tasks.

Career pathways:

Sports Coaching, Sports Science, Sports Nutrition, Sports Therapy, P.E Teaching, Armed Forces, Personal Training





Join the discussion...

which options will you take?



SIXTH FORM

Get in touch!

daintyl@elizabethan.notts.sch.uk
hopperd@elizabethan.notts.sch.uk